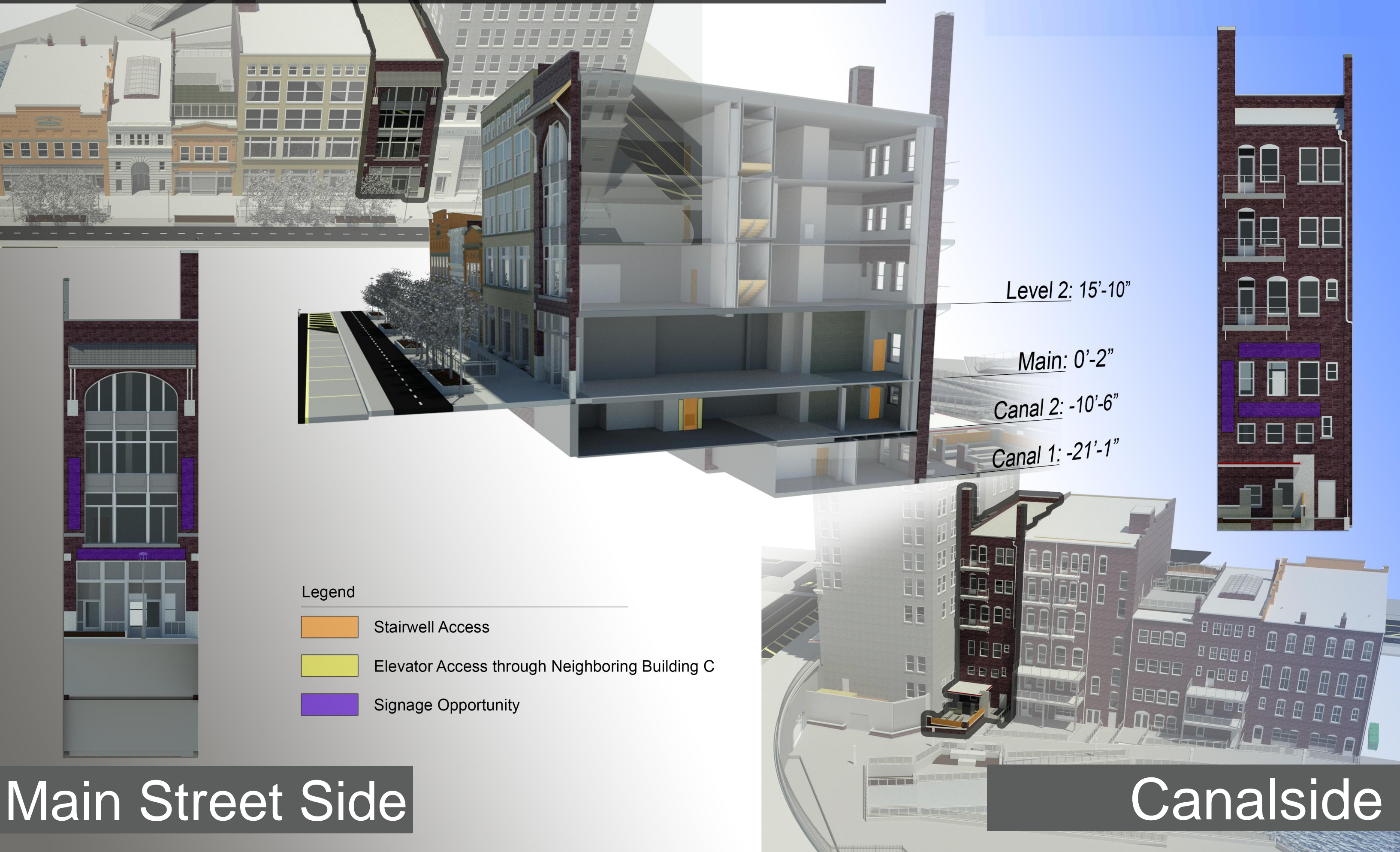


# B - DAY-KLEIN BUILDING | 164 S. MAIN ST, AKRON, OH



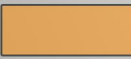


Level 2: 15'-10"

Main: 0'-2"

Canal 2: -10'-6"

Canal 1: -21'-1"

### Legend

-  Stairwell Access
-  Elevator Access through Neighboring Building C
-  Signage Opportunity

## Main Street Side

## Canalside

# B - DAY-KLEIN BUILDING | 164 S. MAIN ST, AKRON, OH

## CANAL 2

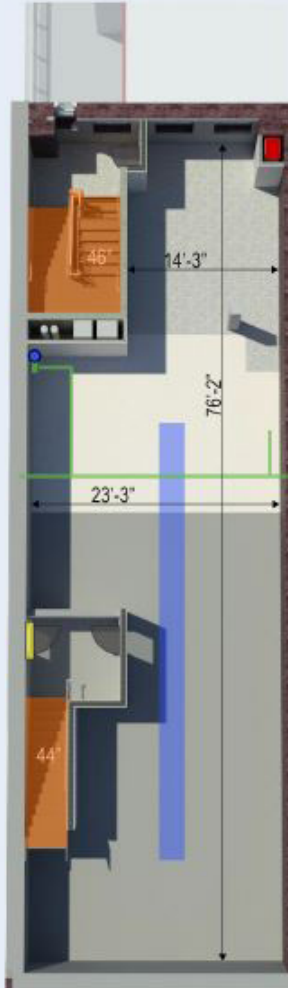
1,571 SF | 9'4"+ Ceiling



- Stair access
- Sanitary line in slab w/ stack near stairs
- Domestic water line distribution on this level
- Exhaust access in NW corner
- Elevator access through doors that connect to Building C

### Legend

- Exhaust Access
- Sanitary Line Access
- Domestic Water - Potential Access
- Elevator Access through Building C
- Stair Access



## MAIN

1,432 SF | 14'6" Ceiling



- Stair access
- Sanitary line in slab w/ stack along east wall
- Domestic water potential near sanitary stack
- No exhaust
- No elevator access

