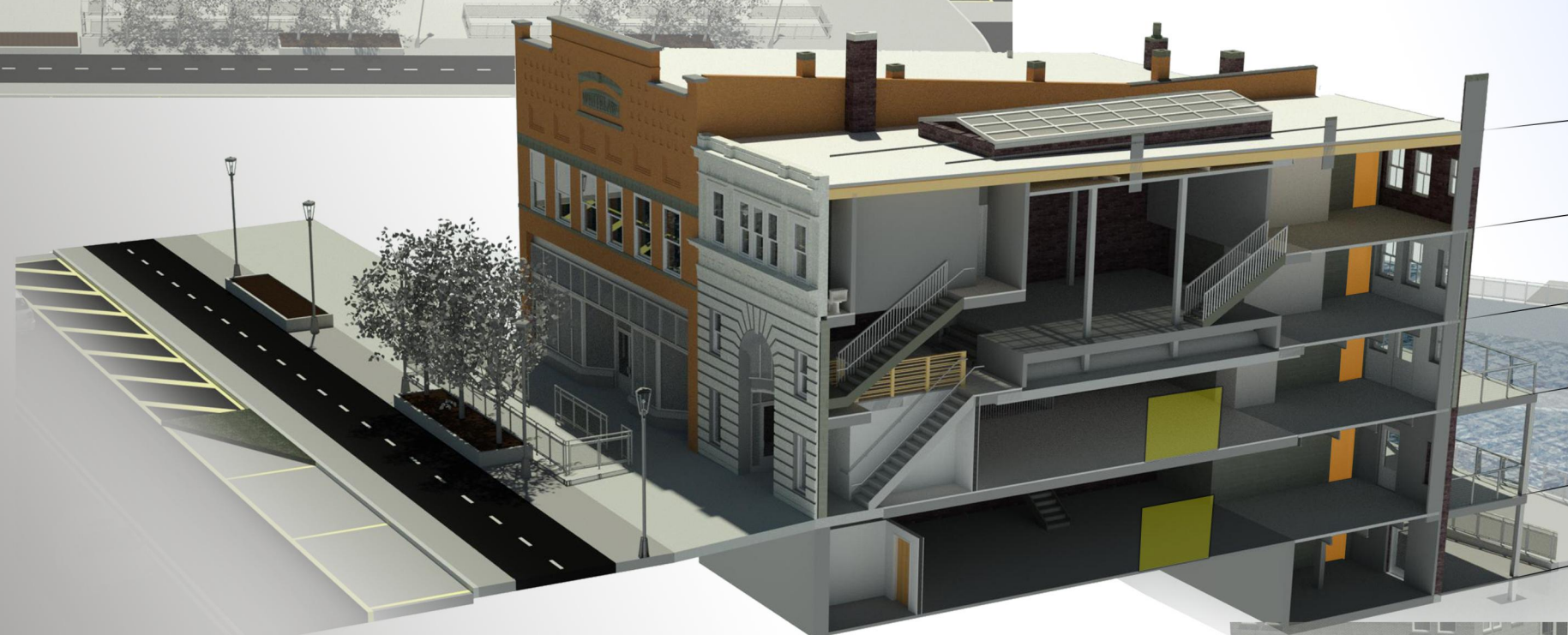
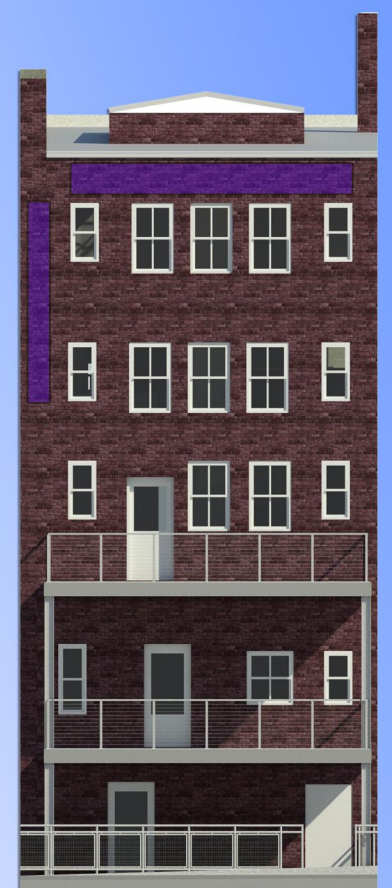


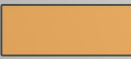
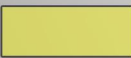
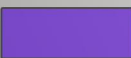
E - STANDARD SAVINGS BUILDING | 174 S. MAIN ST, AKRON, OH



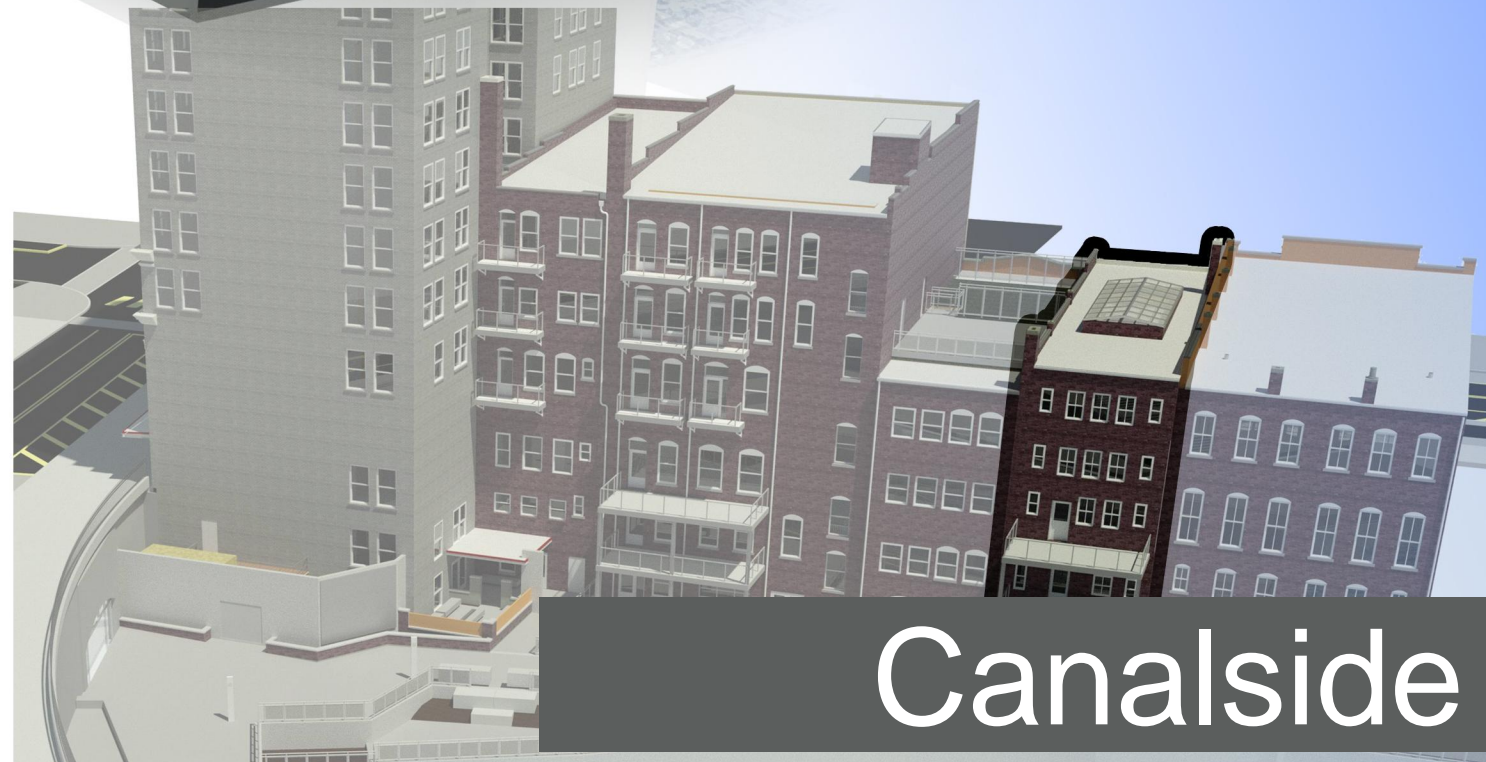
Roof: 31' - 4"
Level 3: 20' - 8"
Level 2: 10' - 9"
Main: 0' - 10"
Canal 2: -11' - 0"
Canal 1: -20' - 10"



Legend

-  Stairwell Access
-  Elevator Access through neighboring Building D
-  Signage Opportunity

Main Street Side

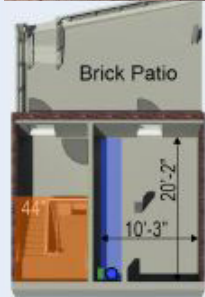


Canalside

E - STANDARD SAVINGS BUILDING | 174 S. MAIN ST, AKRON, OH

CANAL 1

277 SF | 8'6" Ceiling



- Stair access
- Canalside brick patio
- Sanitary line in slab w/ stack along east wall
- Domestic water potential near sanitary stack
- No exhaust
- No elevator access

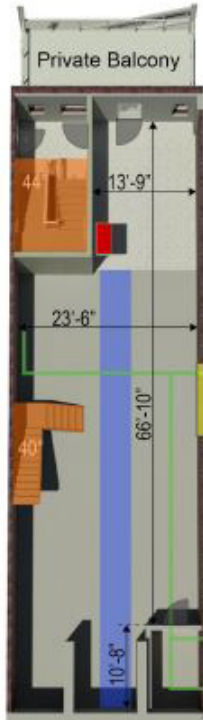
Legend

- Exhaust Access
- Sanitary Line Access
- Domestic Water - Potential Access
- Elevator Access through Building C
- Stair Access



CANAL 2

1,482 SF | 10'6" Ceiling



- Stair access
- Private balcony
- Sanitary line in slab
- Domestic water line distribution on this level
- Exhaust access
- Elevator access through Building D passage



MAIN

1,443 SF | 8'6" Ceiling

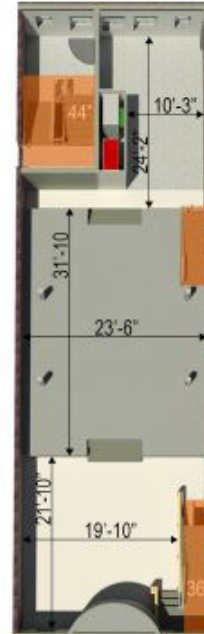


- Stair access
- Private balcony
- Sanitary line connections can be made in floor to tie into vertical stack
- Domestic water connections can be made in floor
- Exhaust access
- Elevator access through Building D passage



LEVEL 2

1,458 SF | 8'8"+ Ceiling



- Stair access
- Sanitary line connections can be made through vertical stack down to Canal 2
- Domestic water connections can be made through vertical stack down to Canal 2
- Exhaust access
- No elevator access



LEVEL 3

733 SF | 9'4"+ Ceiling



- Stair access
- Sanitary line connections can be made through vertical stack down to Canal 2
- Domestic water access in NW corner restroom, other connections can be made through vertical stack down to Canal 2
- Exhaust access
- No elevator access

